

Vtg Stencil DIN Type A

astype[★]

Schablonenschrift A

fonts by Andreas Seidel

ABCDEFGHIJKLM
NOPQRSTUVWXYZ
987-654-3210



THE ABANDONED DIN STENCIL TYPE A

In the 1920s and 30s, simple new letter alphabets constructed from geometric shapes were developed. The most important contemporaries were the Bauhaus teachers Josef Albers and later Joost Schmidt, but also well-known graphic artists like Herbert Bayer, Jan Tschichold and Paul Renner.

The Deutsche Normenausschuss (today German Institute for Standardisation [Deutsches Institut für Normung, DIN]) developed a similar alphabet as stencil type called "Schablonenschrift A" (Stencil Type A) and added¹ it to the DIN 1451 standard. Besides the type specimen, a construction template³ of all characters was included too.

Those responsible were well aware of the limited legibility of this stencil design. Therefore, it was pointed out that the font 1. should only be used for lettering without the highest demands on legibility and 2. single letters and the arrangement of capital letters only should be avoided. Despite its inclusion into the DIN standard, you will hardly find applications of this stencil type. They may have been rather rare. If you

find some samples it might look a little different.

There were usually the much better legible standard DIN types (Normschrift), which were also available in very good quality as brass and zinc stencil sets. Also, the profession of sign painting was very common in those days, and so on historical photos on military equipment one tends to see handpainted letters corresponding to common DIN type. Today, the Stencil Type A is no longer part of the DIN 1451 standard.

Although there is little evidence of frequent use of this type design, it belongs to the group of German stencil type and was even once an official standard. That's why I included it in my stencil font library.

The *Basic* font style is very close to the old Din specification and available as new free font exclusively on my website www.astype.de, which should please all historically interested modelers. It have a limited glyph set but should work for most applications. Please do not redistribute it – the astype EULA remains but the font is free for commercial and non-

commercial use.

The commercial font style *Regular 1* have adapted to my taste and to the typographic demands of today. It features a Latin Extended character set as well Cyrillic letters, slightly changed letter proportions, some more legible letters, better spacing and some letter alternates. Its no longer in full line to the old DIN 1451 specs.

Enjoy the fonts and do some great stuff!

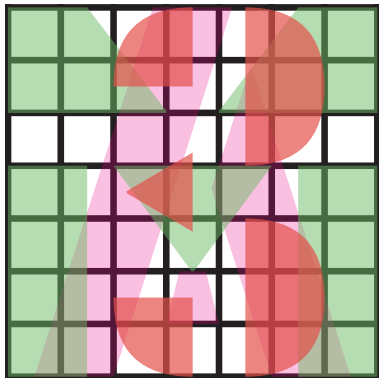
Deutsche Normenausschuss (heute DIN Deutsches Institut für Normung)



¹ historical document: page 5 of DIN 1451 specs, Oktober 1943 (nowadays obsolete)

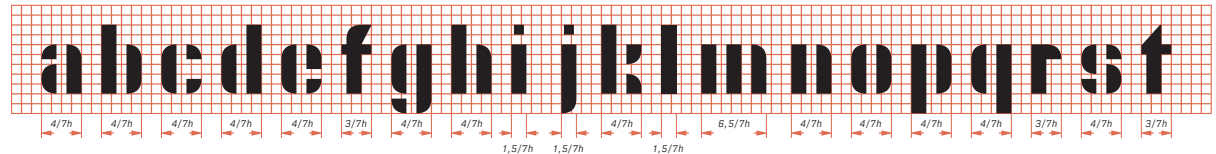
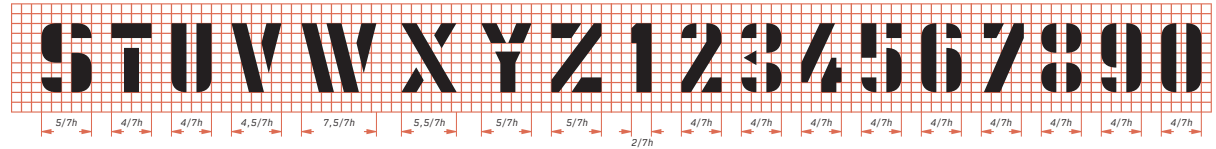
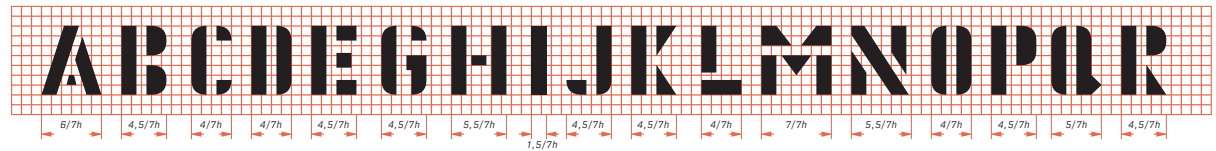
Stencil Type A, Grid and Blueprint

The stencil type is constructed on a grid² based on a square that is divided seven times from both sides. But the design also uses half grid squares. The stem weight is 1.5 units. In some places like the number 3 even quarter grid squares. The seven divisions are sufficient for quick orientation, but there are actually 28 units - no problem if you work on graph paper.



² 7x7 construction grid

letter spacing: $\frac{3}{4}h$
word spacing: $\frac{1}{2}h$



³ Schablonenschrift A (Stencil Type A) construction template, blueprint

Vtg Stencil DIN Type A

Basic

Aa Bb Cc Dd Ee Ff Gg Hh Ii Jj Kk

Ll Mm Nn Oo Pp Qq Rr Ss Tt Uu

Vv Ww Xx Yy Zz B :;!?

0123456789

ä ö ü

Basic Charater Set

compliant with the obsolete
Stencil Type A appendix of DIN 1451

Free Font

Vtg Stencil DIN Type A

Regular

Aa Bb Cc Dd Ee Ff Gg Hh Ii Jj Kk

Ll Mm Nn Oo Pp Qq Rr Ss Tt Uu

Vv Ww Xx Yy Zz BB ;!?

@ \$€£ % # 0123456789

āăą éêë ě ħ ï ð š ť ž

Latin & Latin Extended Character Set

Vtg Stencil DIN Type A

Regular

Аа Ёё Вв Гг Гг Дд Тт Её
Её Жж Зз Ии Йй Її Кк Лл
Мм Нн Оо Пп Рр Сс Тт Тт
Уу Ўў Фф Хх Цц Ыы Чч
Шш Щщ Ъъ Ьь Ээ Юю Яя

Cyrillic Character Set

Vtg Stencil DIN Type A

Regular

Opentype Features

A A

Stylistic Set SS01

K K K

SS02 SS03

L L

SS04

M M M M

SS05 SS06 SS07

R R

SS08

No.

No

Discretionary Ligatures

0121

0121

Tabular Figures

Alternate Letters

VANGUARD MALA KIM

VANGUARD MALA KIM

VANGUARD MALA KIM

Technisches Hilfswerk

SAFETY GLASSES & HARD HATS REQUIRED

MASCHINENFABRIK

Hellmut Bauer, Inspektor Hafenmeisterei

DIN ISO EN 9001:2008

WOMEN NOW
MEN NOW

**BERLIN
CALLING**



Street Art Festival





ACME INC.

Science Lab A2

Dr. P.E. Hoghard Tokashi

ASTYPE FONTS

Stencil Collection

available at astype.de
fontspring.com

VTG STENCIL US N°2

VTG STENCIL US N°51

VTG STENCIL MARSH

VTG STENCIL US N°72

VTG STENCIL UK N°2

VTG STENCIL UK N°76

Vtg Stencil Germany N°1

Vtg Stencil DIN

Vtg Stencil DIN Type A

Vtg Stencil Germany N°101

Vtg Stencil France N°1

VTG STENCIL FRANCE N°3

VTG STENCIL FRANCE N°5

VTG STENCIL ITALY N°2

Secca Stencil

