

SIMEON



RHOMANORUM · IMPERATORI · INVICTISSIMO · CÆSARI · AUGUSTIS-
SIMO · GLORIOSISSIMO · SERENISSIMO QUÆ · CHRISTIANÆ ·
REIPUBLICÆ · TUTORI · FAUSTISSIMO · MAXIMILIANO ·
DIVÆ · BEATISSIMI · PRÆSULIS · UDALRICI · PRO ·
PAGINIS · GÆRMINI · NOBILISSIMO · SORTE ·
INFIMUS · FRATER · LEONARDUS · WIRSTLIN ·
PRÆNOMINATI · ANTISTITIS · MO-
NASTERII · AUGUSTÆ · MAN-
CIPIIUM · SCRIPTURARUM ·
CÆNTUM · MANU · UNA ·
EXARATARUM · CON-
TINENTIAM ·
EMENDANDAM ·
CORRIGENDAM QUÆ ·
HUMILLIME ·
OFFERT



ich LASS MICH NICHT VERARSCHEN VON
EUCH VERLOG'NEM PACK ^ IHR SEHT DAS
ENDE KOMMEN MIT JEDEM NEUEN TAG:
BEKÄMPFT ODER ERDULDET DAS ALL-
GEMEINE LEID ^ DOCH WAGT IHR NICHT
ZU SEHEN ^ DASS IHR ES SELBER SEID:
IHR GLAUBT AN SCHÖNE WORTE ^ IHR
GLAUBT AN EINEN GOTT ^ UND HULDIGT
IHM ZUM FESTE MIT ENTE UND KOM-
POTT: ¶ **DAS** GANZE JAHR EIN ARSCHLOCH
UND DANN FÜR EINEN TAG ^ BEGINNT
IHR EUCH ZU LIEBEN ^ DASS ICH ES NICHT
ERTRAG: ¶ **IHR** GLAUBT EUCH ZU BESIN-
NEN ^ WENN EUER LICHTLEIN BRENNT ^
DOCH WER DENKT SCHON AN JENE ^ DIE
ER NICHT SELBER KENNT: ¶ **UND** WENN
ICH'S DOCH VERSUCHE ^ VERSPÜR ICH
NEID UND HOHN ^ WERF ICH DOH MEINEN
NÄCHSTEN VON SEINEM EIG'NEN THRON:

IHR GLAUBT MAN MUSS NUR LIEBEN UND
SCHON IST ALLES GUT ^ DOCH WER ZEIGT
EUCH DIE GRENZE ZU EIFERSUCHT UND
WUT: ¶ **IHR** WOLLT DOCH NUR BESITZEN ^
UND AUCH DAS GRÖSSTE SCHWEIN SEHNT
SICH NACH EINEM LIEBSTEN ^ UND IST
NICHT GERN ALLEIN: ¶ **IHR** SCHIMPFT AUF
ALL DIE KINDER ^ DIE NIE ZUFRIEDEN
SIND ^ IHR FLUCHT AUF ALL DEN REICH-
TUM ^ DEN MAN DURCH EUCH VERDIENT:
IHR SAGT ^ IHR WÄRET GLÜCKLICH MIT EI-
NEM LEEREN SACK ^ ICH LASS MICH NICHT
VERARSCHEN VON EUCH VERLOG'NEM
PACK:

WEIHNACHTSSCHIMPF
KNORKATOR 1999

IN 1470 PETER SCHÖFFER ISSUED A CATALOGUE OF HIS PUBLICATIONS IN WHICH THE TYPE OF HIS 1457 PSALTER WAS SHOWN WITH THE WORDS: "HAEC EST LITTERA PSALTERII" (THIS IS THE PSALTER TYPE). THIS SINGLE SHEET CAN BE CONSIDERED THE FIRST PRINTED TYPE SPECIMEN IN THE WORLD. SIXTEEN YEARS LATER, ERHARD RATDOLT, SHORTLY AFTER HIS RETURN FROM VENICE, PRODUCED HIS FAMOUS TYPE SAMPLE SHEET, PROUDLY DISPLAYING THE FOURTEEN TYPE FACES OF HIS AUGSBURG PRINTING OFFICE. BOTH THESE SPECIMEN WERE DEVOTED TO TYPES WHICH WERE AVAILABLE AT A SINGLE PRINTING SHOP ONLY. NEARLY ALL THE EARLY PRINTERS HAD THEIR OWN TYPE FACES, SO THEIR WORK CAN TODAY BE IDENTIFIED BY THE TYPES USED. NOT UNTIL THE SIXTEENTH CENTURY TYPES WERE OFFERED FOR SALE. THE FIRST TYPE FOUNDRIES WERE SET UP BY JACOB SABON WITH THE EGENOLFF FAMILY IN FRANKFURT, BY GUILLAUME LE BÉ IN FRANCE, AND BY THE ELZEVIER IN THE NETHERLANDS. FAMOUS TYPE CATALOGUES OF LATER PERIODS ARE THE ENSCHÉDEE SPECIMEN OF 1768 AND BODONI'S "MANUALE" OF 1818. IN ADDITION TO TYPE FOUNDERS' SPECIMENS, WE ALSO FIND TYPE SAMPLES ISSUED BY FAMOUS PRINTERS WHO TRIED TO IMPRESS THEIR CUSTOMERS BY THEIR EXTENSIVE RANGE OF TYPES. A SPECIMEN OF THIS KIND WAS ISSUED IN 1687 BY THE PRINTING OFFICE OF JOHANNES VAN GHELEN IN VIENNA. SPECIMENS VARIED IN EXTENT FROM SINGLE OR DOUBLE SHEETS, TO BOOKLETS OF A FEW PAGES AND EVEN LARGE SIZE VOLUMES. THE DESIGNS OF TYPES AND ORNAMENTS ARE VALUABLE DOCUMENTS OF THEIR TIME. THE TEXTS USED ARE MAINLY INTENDED TO PRESENT A PARTICULAR TYPE FACE. THERE ARE SPECIMENS, HOWEVER, CONSISTING OF SIGNIFICANT TEXTS SUCH AS THE LORD'S PRAYER IN 155 LANGUAGES PRINTED BY BODONI IN 1806, OR THE MONUMENTAL SPECIMEN "MILESTONES IN WORLD LITERATURE" PRODUCED FOR DRUGULIN AT LEIPZIG IN 1902.

HELMUT PRESSER, 1966

A LETTER is a symbol,

with a definite shape and significance, indicating
a single sound or combination of sounds, and
providing a means through grouping, for the vis-
ible expression of words - that is of thoughts.

FREDERIC W. GOUDY

SAN ANTONIO DE PADUA 

FATHER CHARLES DE FOUCAULT 

BEATO NUÑO ALVARES DE PEREIRA 

BEATAS TERESA DE SAN AGUSTÍN Y COMPAÑEROS 

OUR LADY OF GUADALUPE 

ANGEL ESCRIVAS 

THE HOLY INNOCENTS 

THE HOLY GUARDIAN ANGELS 

A A A Æ B C D D
E F F G H I I J K L M N
O Æ p q Q R R S
T T T U V W
X X X
y z

Œ Ŧ Ţ Ũ

© € ₣ ⓘ Ⓜ Ⓣ Ⓤ

✓ ∅ ∏ 69 ∂ ∩

Ω ∩ ✎ Ⓝ ⚡ ⚡

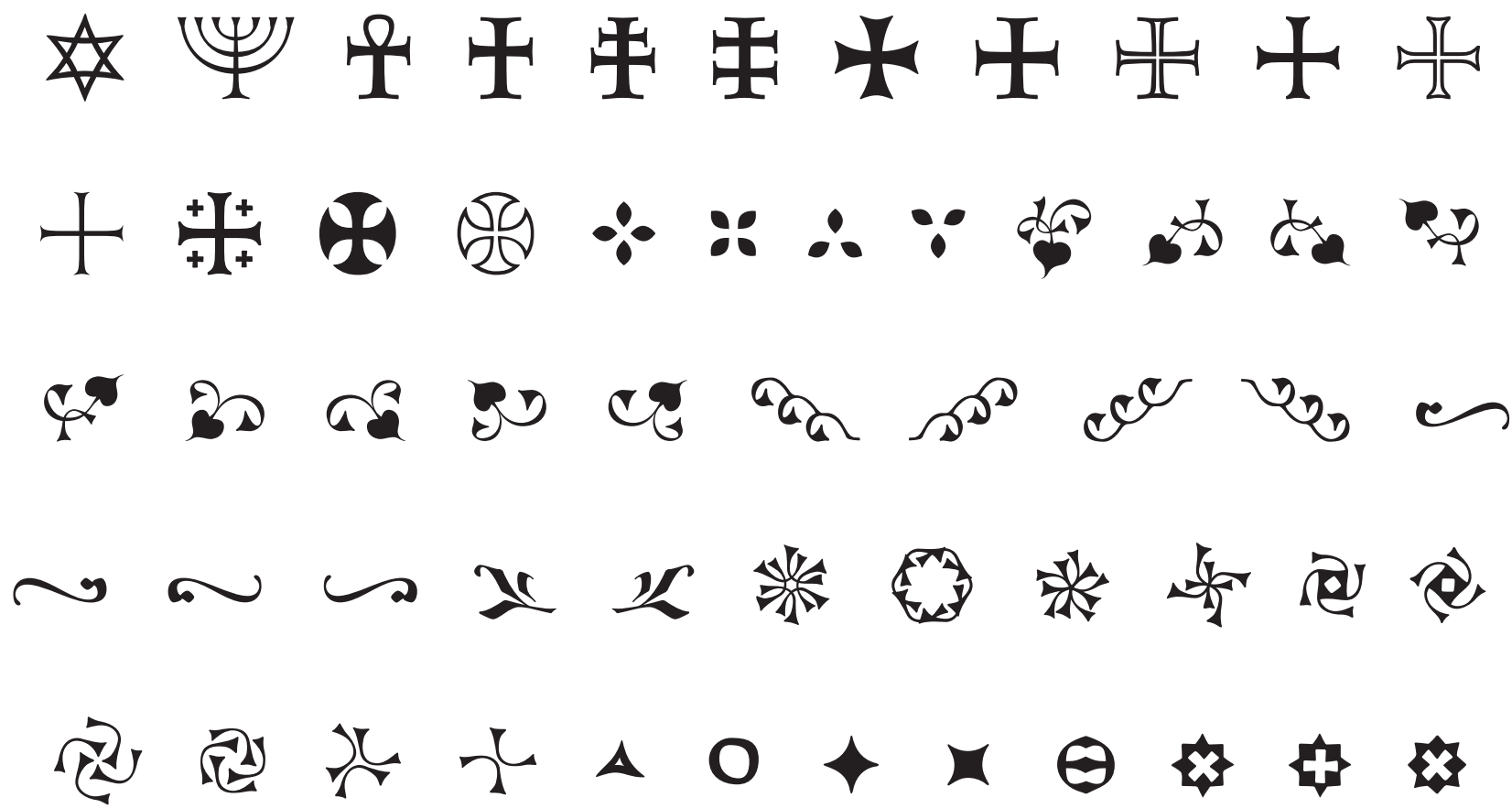
I II III IV V VI VII VIII IX X

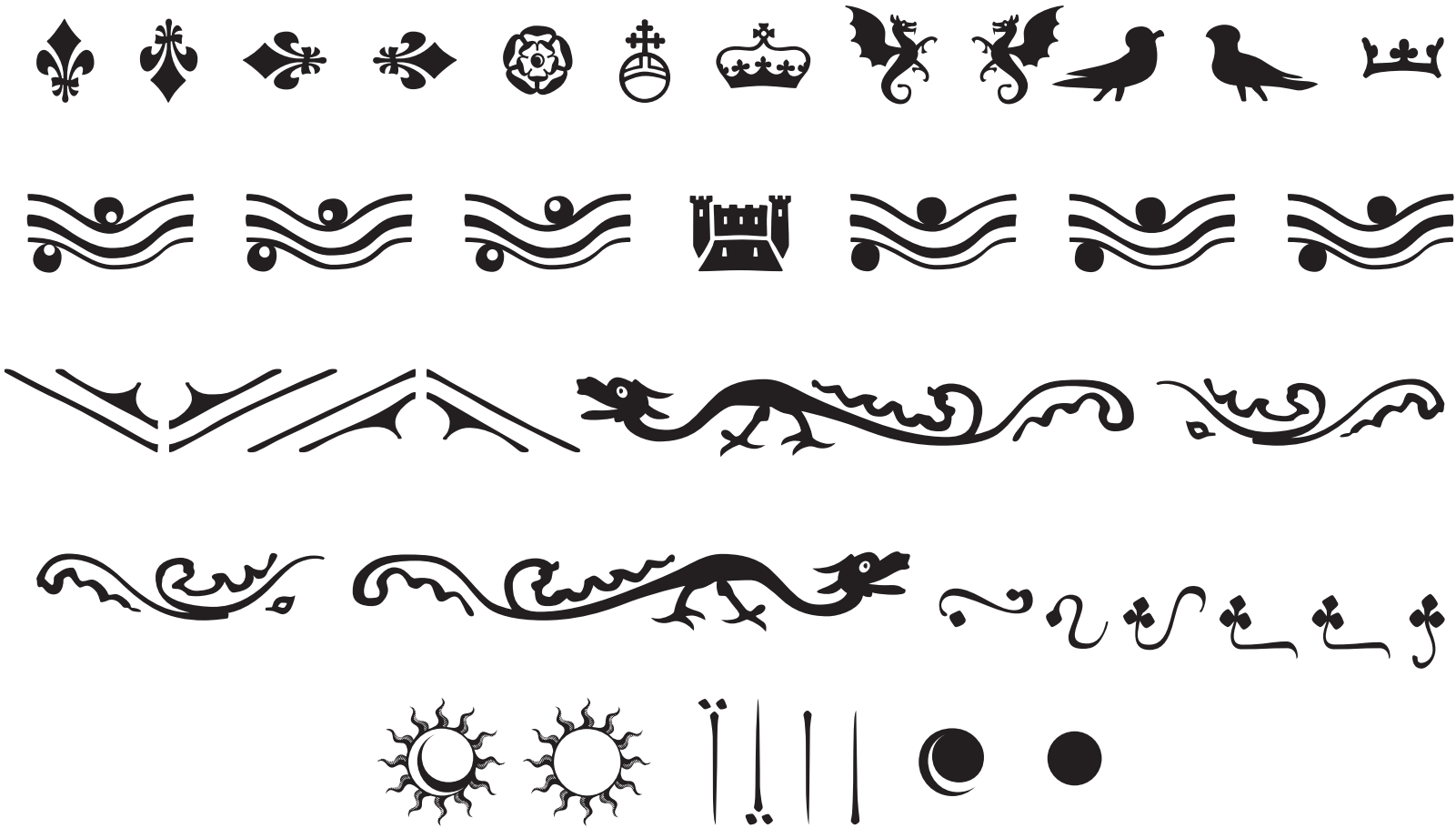
XI XII L C D M CD D @ O

I II III IV V VI VII VIII IX X

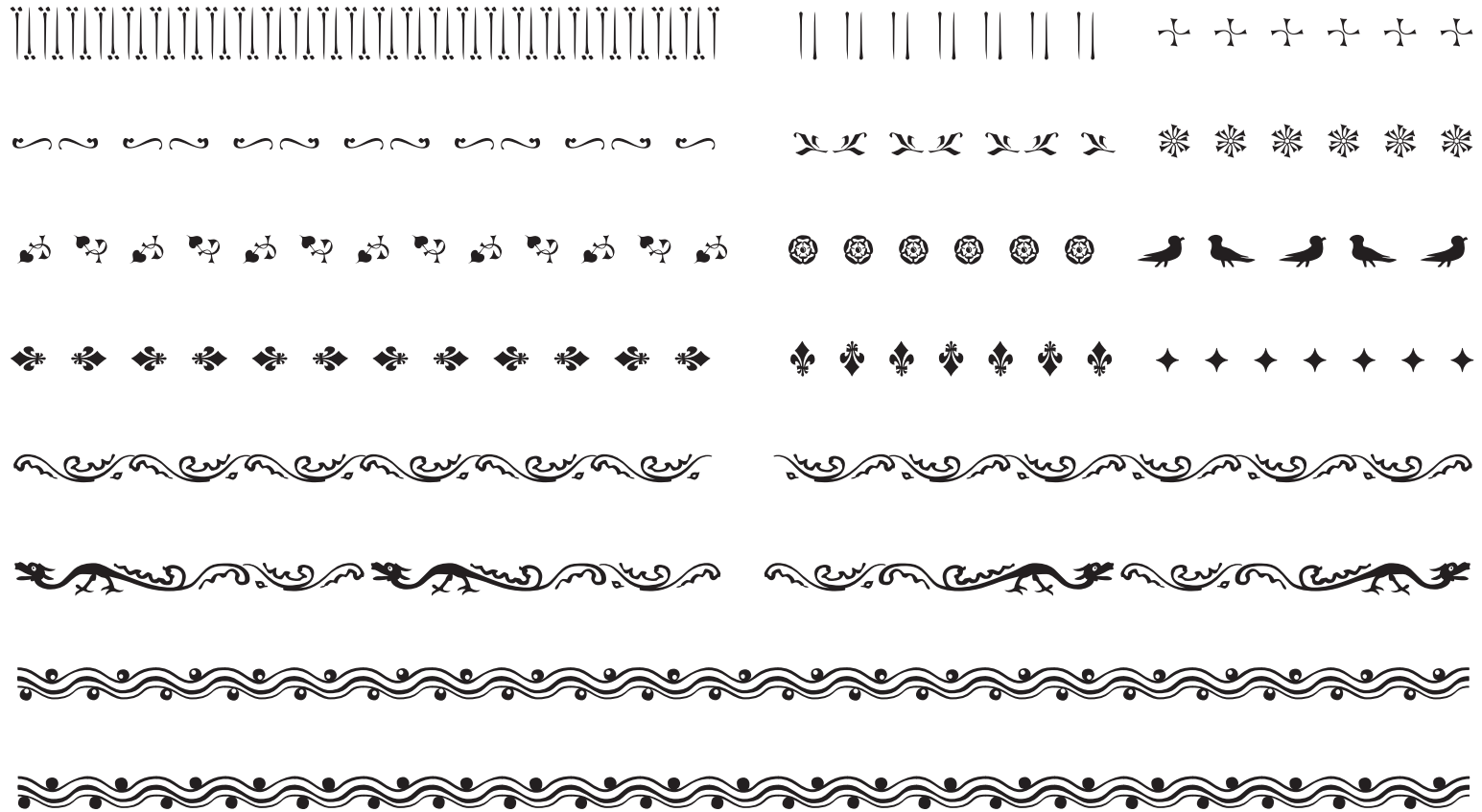
XI XII L C D M CD D @ O

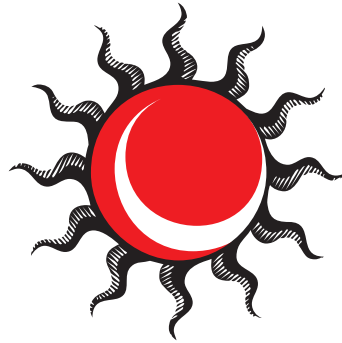
III iii VIII viii











JESUS · NAZARENUS · REX · JUDE[®]OLIM ·