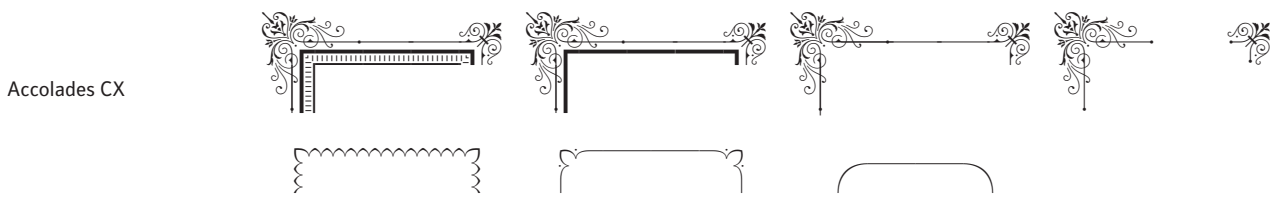
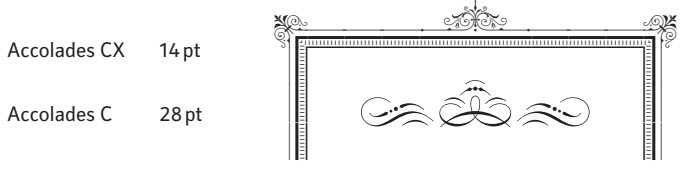
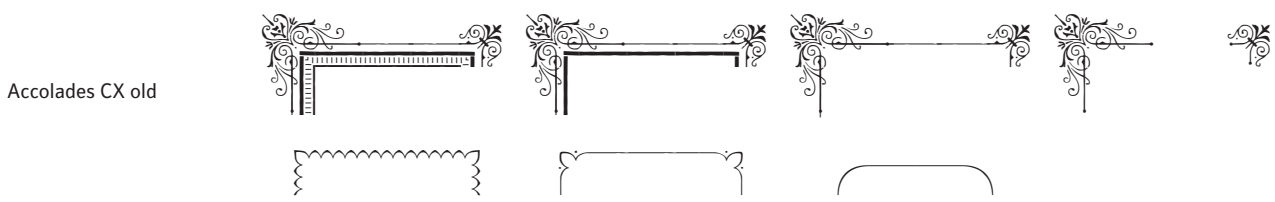


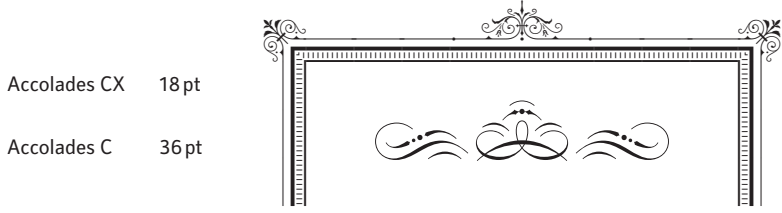
# Astype Ornaments



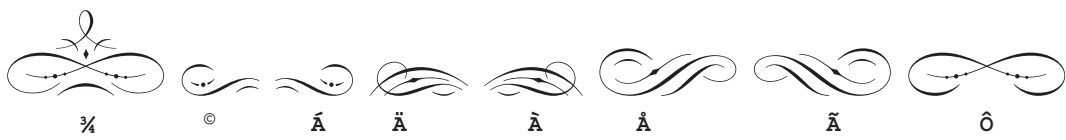
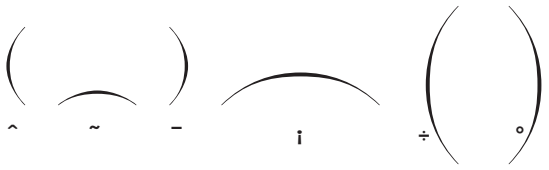
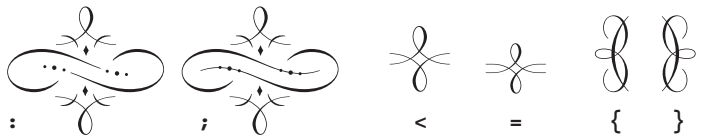
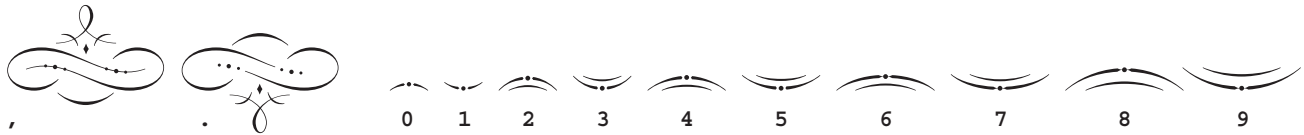
distressed and grungy font variations



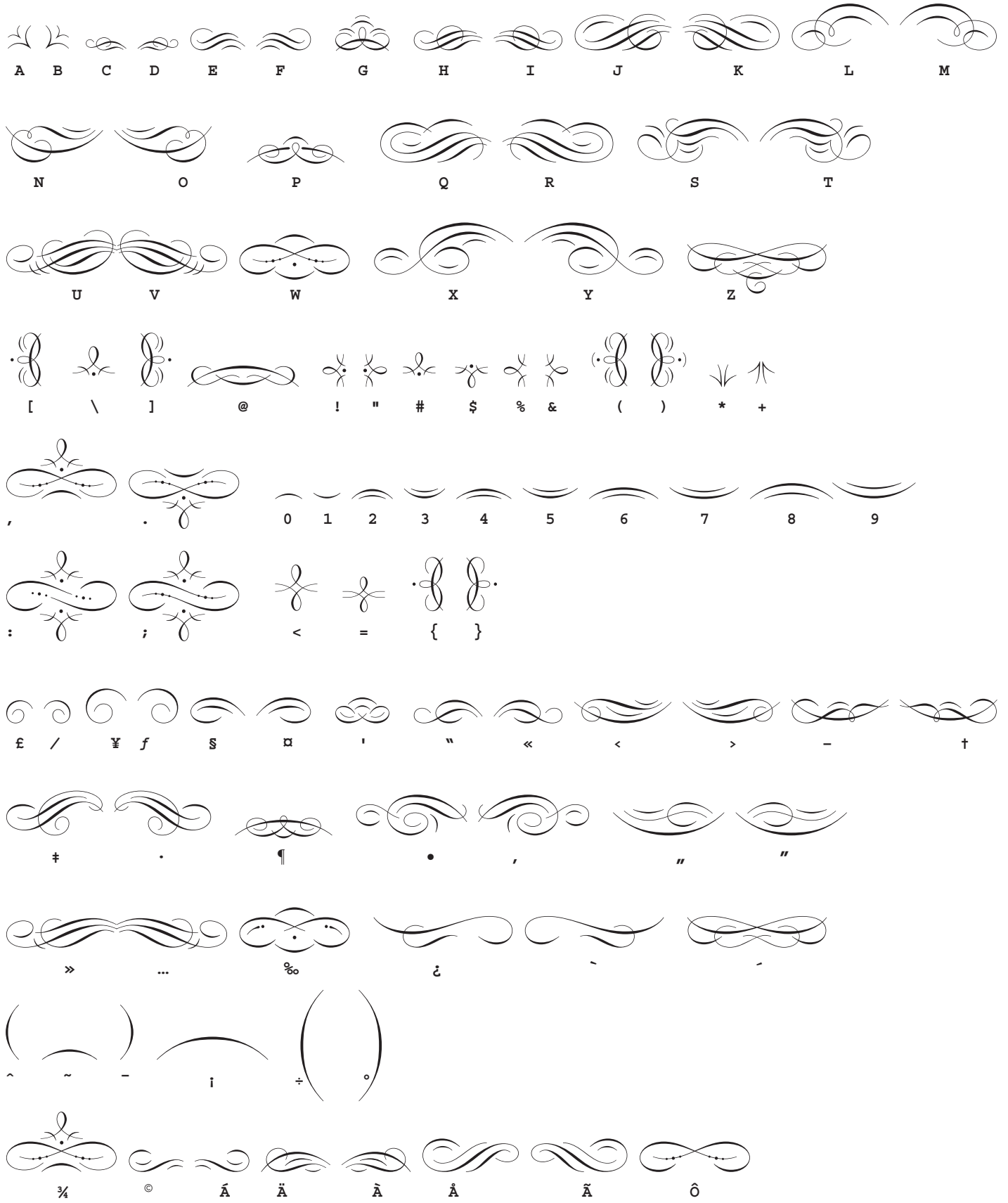
The best proportion between *Accolades C*, *C2* and the border set *Accolades CX* is two to one. A floral element of *Accolades C* at a size of 28 pt a border element of *Accolades CX* at 14 pt fits best.



Accolades C



Accolades C2



Accolades CX



A B C D E F G H I



£ / 1 7 ( ) 8 2

Please use these glyphs and turn on the OpenType features scientific superiors, scientific inferiors and numerators to switch between the three main border styles.



J K L M N O P Q R



< > 9 0



S T U V W X Y Z



" "



The OpenType features like tabular figures or stylistic sets will activate some additional secondary border elements. You can combine primary and secondary border elements to maximize the effect.



The right combination of background color and ornaments will result in some very different emotional effects. For this logo-sample a special chromatic version of the Secca font was used, called *Secca Saloon*.

WHOLE BEAN • FRESH ROAST

**CONTINENTAL HIGHLAND COFFEE**

52

**FAITH AND LIGHT**

written by

**MATTHEW CHAMBERS**

COMPOSED BY

**GEORG ROBERT WOOD**

published by

ANVOICES • NEW YORK

**PEPPER**





MARIA KNOPFLER  
& CLARK SIMON



*request the  
honour of your presence  
at their marriage on Saturday,  
the third day of July 2012  
at five o'clock in the evening  
at Albany Methodist  
Church.*



FRANKFURT  
DIAMOND  
ROADS  
AMSTERDAM  
JOHANN HOFFRICHTER  
GERHARD MARTAHLER  
1865  
ADA


MONTAGUE  
**BURTON**  
THE TAILOR OF TASTE

**BOUTIQUE**

*Napa Valley's*  
**RIESLING**  
SPARKLING  
N°6

*Your Golden Token*

# **featured fonts**

A decorative flourish in red, consisting of several elegant, sweeping curves and loops, with a small cluster of four dots in the center.

Secca

Secca Art Std

**Secca Saloon Std**

*Gracia & Gracia Solo*

**Vtg Stencil Germany №1**

**Wood Bonnet Antique №7**

**Wood Bonnet Grotesque №4**