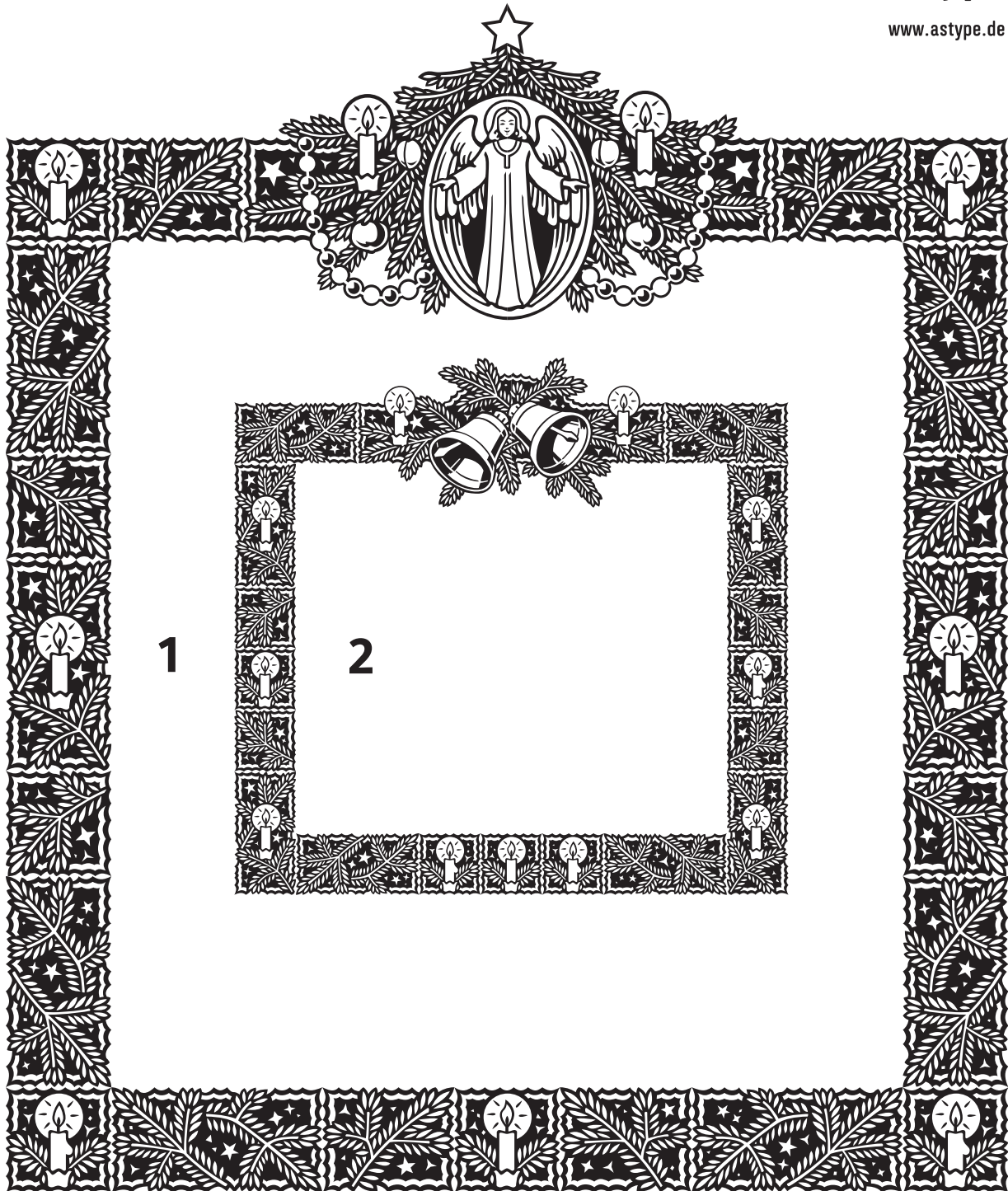


ASTYPE
ORNAMENTS



Christmas
A



1 ornament type size: 48pt
 leading: 48pt

2 ornament type size: 28pt
 leading: 28pt

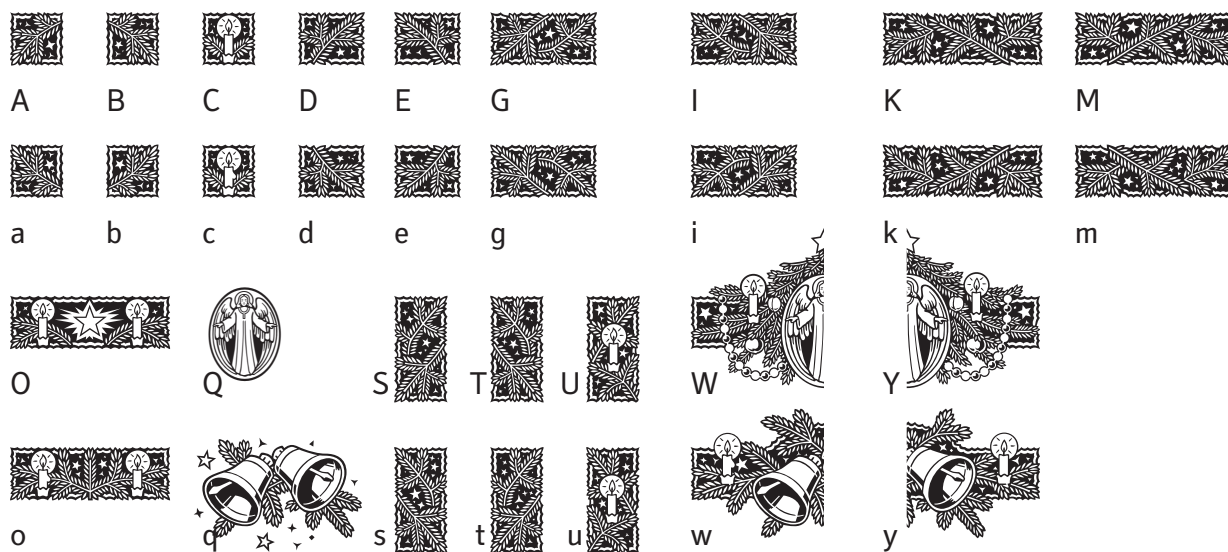
Note: Due to the complexity of some parts of the font, some printers may have problems of rendering it smoothly. To avoid this problem you should always outline the font data for the final documents.

On older or weaker hardware systems turn font antialiasing off for faster screen redraws.

ASTYPE Ornaments

Christmas A

ornament glyph mapping



feature: Small Capitals changes some of the small parts



Step 1: new layer, black or dark green ink



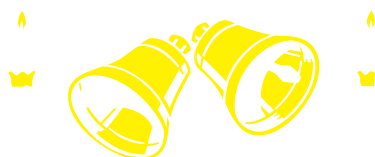
Step 2: new layer, green ink
turn on feature: Superscript/Superior



Step 3: new layer, gold ink
turn on feature: Subscript/Inferior



Step 4: new layer, red ink
turn on feature: Numerator



Step 5: new layer, light yellow ink
turn on feature: Denominator

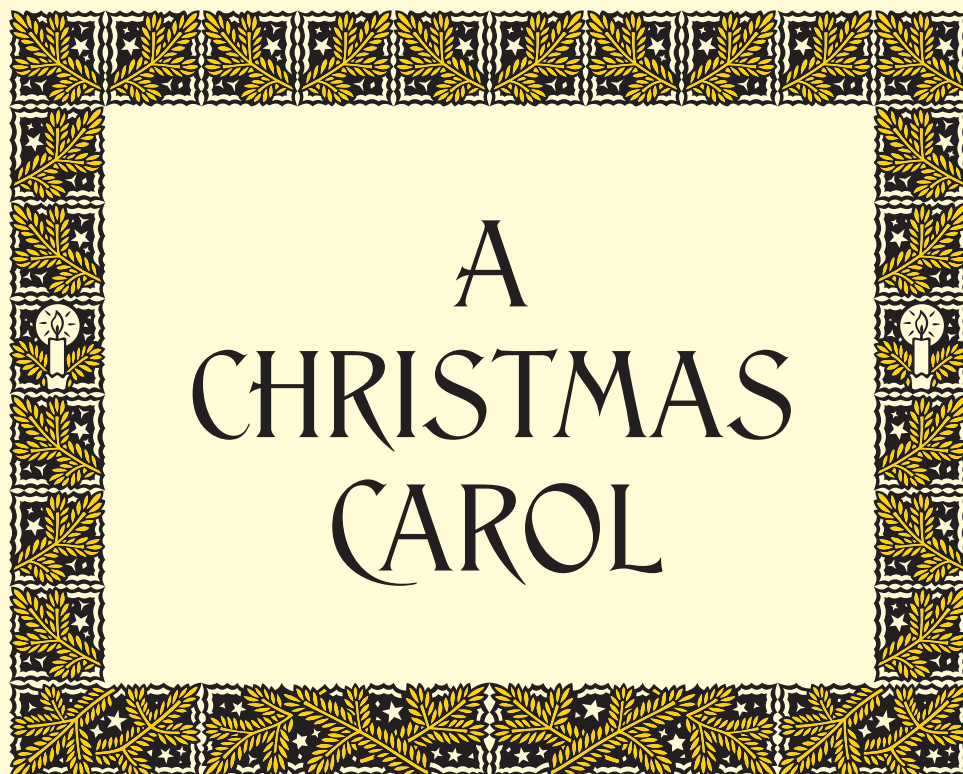


Done! Try to use gradients for the bells.



Stille Nacht

Vater Unser im Himmel, geheiligt werde
 Dein Name, dein Reich komme. Dein
 Wille geschehe, wie im Himmel, so auf
 Erden. Unser tägliches Brot gib uns heu-
 te, und vergib uns unsere Schuld, wie
 auch wir vergeben unseren Schuldigern.
 Und führe uns nicht in Versuchung, son-
 dern erlöse uns von dem Bösen. Denn
 Dein ist das Reich und die Kraft und die
 Herrlichkeit, in Ewigkeit. Amen. | Our
 Father which art in heaven. Hallowed be
 thy name. Thy kingdom come. Thy will
 be done in earth, as it is in heaven. Give
 us this day our daily bread. And forgive
 us our debts, as we forgive our debtors.
 And lead us not into temptation, but de-
 liver us from evil: For thine is the king-
 dom, and the power, and the glory, for ever.
 Amen.



A CHRISTMAS CAROL



SANTA CLAUS
Christmas Company

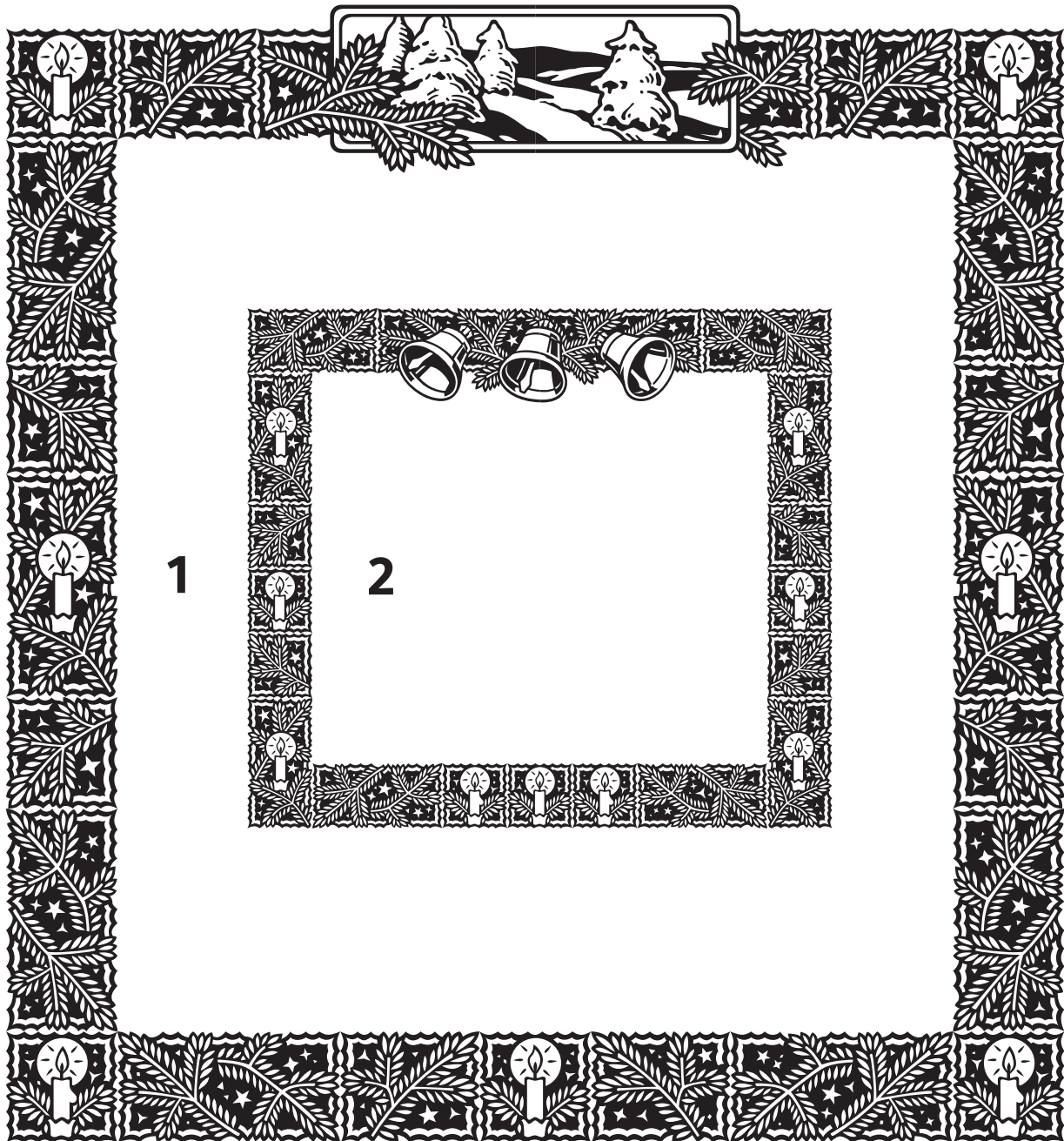


ANGELKNIGHT
productions

ASTYPE
ORNAMENTS



Christmas
A2



1 ornament type size: 48pt
 leading: 48pt

2 ornament type size: 28pt
 leading: 28pt

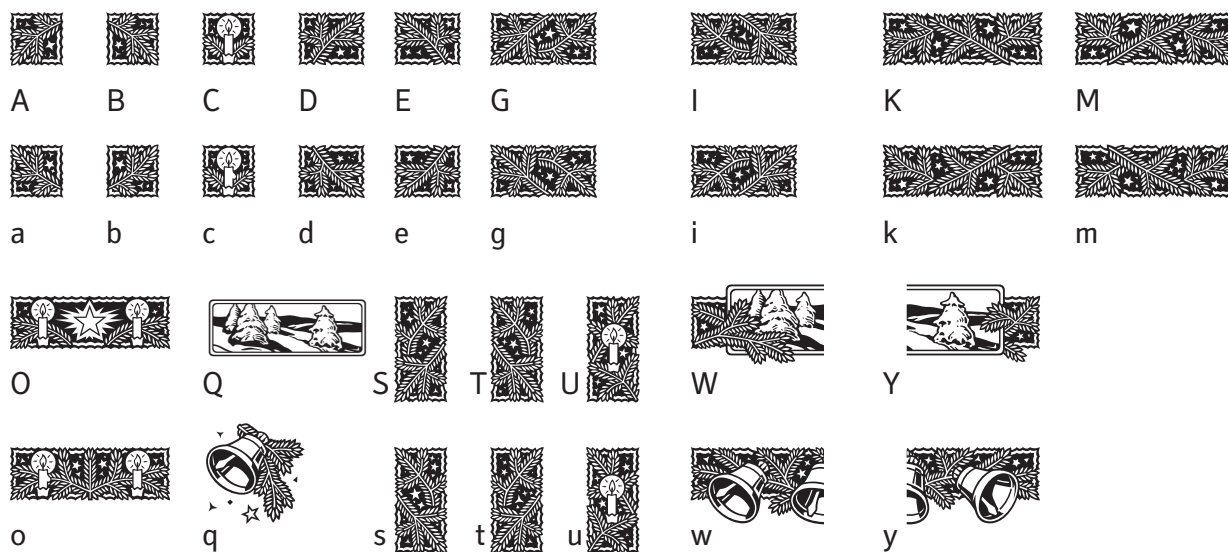
Note: Due to the complexity of some parts of the font, some printers may have problems of rendering it smoothly. To avoid this problem you should always outline the font data for the final documents.

On older or weaker hardware systems turn font antialiasing off for faster screen redraws.

ASTYPE Ornaments

Christmas A

ornament glyph mapping



feature: Small Capitals changes some of the small parts



Step 1: new layer, black or dark green ink



Step 2: new layer, green ink
turn on feature: Superscript/Superior



Step 3: new layer, gold ink
turn on feature: Subscript/Inferior

Step 4: new layer, red ink
turn on feature: Numerator



Step 5: new layer, light yellow ink
turn on feature: Denominator

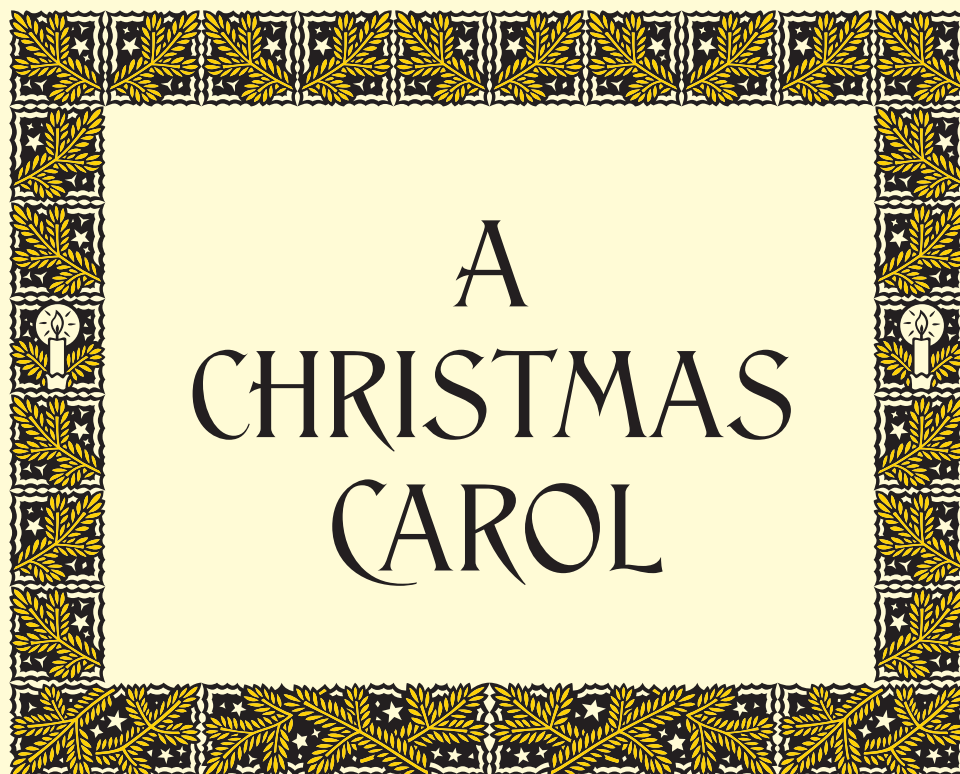


Done! Try to use gradients for the bells.



Stille Nacht

Vater Unser im Himmel, geheiligt werde
Dein Name, dein Reich komme. Dein
Wille geschehe, wie im Himmel, so auf
Erden. Unser tägliches Brot gib uns heu-
te, und vergib uns unsere Schuld, wie
auch wir vergeben unseren Schuldigern.
Und führe uns nicht in Versuchung, son-
dern erlöse uns von dem Bösen. Denn
Dein ist das Reich und die Kraft und die
Herrlichkeit, in Ewigkeit. Amen. | Our
Father which art in heaven. Hallowed be
thy name. Thy kingdom come. Thy will
be done in earth, as it is in heaven. Give
us this day our daily bread. And forgive
us our debts, as we forgive our debtors.
And lead us not into temptation, but de-
liver us from evil: For thine is the king-
dom, and the power, and the glory, for ever.
Amen.



A CHRISTMAS CAROL



WOODKNIGHT
productions